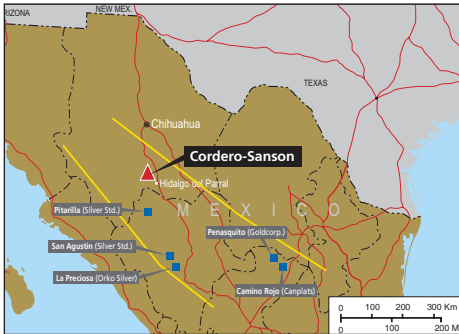




Drilling at Levon's Cordero-Sanson project in 2009 encountered outstanding grades and expanded the mineralized zones.

AT A GLANCE

- District-scale Ag, Au, Pb, Zn porphyry target on Cordero-Sanson property, Mexico. Outstanding drill results to date.
- Phase II Cordero drilling (Jan 2010) to include offset grid drilling around C09-5 and C09-8 discovery hole areas and continued drilling of outlying, mine scale targets.
- Exploration agreement with Barrick Gold on Norma Sass property, Nevada with drilling now underway.
- Norma Sass & Ruf claims alongside Cortez-Pipeline mine, one of North America's premier, Carlin-type gold producers.
- Current Congress, British Columbia resource contains over 194,000 ounces Au (measured, indicated and inferred).
- Debt-free and funded for present exploration plans.



The Cordero-Sanson project lies within the emerging Chihuahua-Zacatecas silver-gold belt.



Mineralized drill core from the 2009 campaign. Phase II drilling begins in January 2010.

The claims are centered on a mineralized belt with four porphyries. The strike length is 6 km; the width is about 3 km.

CORDERO-SANSON PROPERTY - State of Chihuahua, Mexico

Bulk Mineable Targets in an Emerging Porphyry Belt

The 20,000-hectare Cordero-Sanson property hosts bulk mineable targets and extensive, open-ended geochemical and IP anomalies. The claims are centered on a mineralized belt of four porphyries defined through a strike length of 6 km and a width of about 3 km located within the emerging Chihuahua-Zacatecas silver-gold belt. This important new trend includes the Penasquito (Goldcorp), Camino Rojo (Canplats), Pitarilla (Silver Standard) and other large-scale porphyry mines and projects.

Phase I diamond drilling at Cordero-Sanson, completed in October 2009, encountered outstanding values. Hole C09-5 included **152m grading 80.64 g Ag/t and 0.61 g Au/t**. Complete results were reported as follows:

Hole	Zone	From (m)	To (m)	Length (m)	Ag (g/T)	Au (g/T)	Zn (%)	Pb (%)
C09-1	Pozo de Plata	0	70	70	29.14	0.08	0.25	0.15
C09-2	Pozo de Plata	6	88	82	31.74	0.27	0.15	0.23
C09-3	Cordero Dome	72	92	20	88.34	0.14	1.90	1.69
C09-3	Cordero Dome	184	192	8	25.38	0.56	1.45	0.31
C09-4	Pozo de Plata	122	130	8	32.50	0.21	0.62	0.34
C09-5	Pozo de Plata	92	244	152	80.64	0.61	1.41	1.22
C09-5(incl.)	Pozo de Plata	130	202	72	150.16	1.06	2.48	2.27

Grid drilling will attempt to begin building a reserve/resource base around discovery hole C09-5 in the Pozo de Plata diatreme complex also discovered in 2009 and discovery hole C09-8 in the Cordero Volcanic Dome complex one kilometre to the northeast. Additional geochemical and geophysical surveys and geologic mapping will continue as well with the goal of defining further large scale, bulk tonnage targets.

Focus on District-scale Ag, Au, Pb, Zn Porphyry Targets

The targets at Cordero/Sanson are widely spaced across the Cordero District and include:

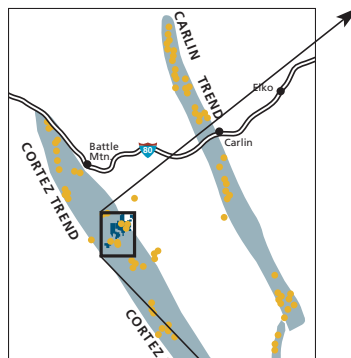
1. **Pozo de Plata Diatreme Dike Complex** at the present SW end of the belt.
2. The down dip projection of outcropping bonanza Ag veins (Au, Zn, Pb) in the **Cordero Volcanic Dome Complex** immediately to the NE
3. **Porphyry targets in the Cordero Dome Complex**
4. **La Ceniza Limestone-Roofed Stock**. The down dip projections of outcropping bonanza veins and associated replacement deposits immediately NE.

The targets are defined on the basis of detailed geologic mapping, the district scale soils grid, rock chip samples, and chargeability anomalies from a 3D induced polarization survey completed in July, 2009 with other deposits in the emerging silver-gold belt (including Penasquito, Camino Rojo, and San Agustín).

NORMA SASS CLAIMS - Nevada

Near Pipeline mine at Crescent Valley, Nevada

An outstanding target for discovery of Carlin-style gold deposits, Norma Sass is located immediately south of the Gold Acres mine and west of the Cortez/Pipeline Mine. Its geological/geographical setting make Norma Sass one of the region's prime properties. Previous drilling encountered gold hosted by favorable, lower-plate carbonate strata. Norma Sass is owned 1/3 by Levon and 2/3 by Coral Gold Resources.



Barrick Exploring Norma Sass Under Agreement with Levon

Barrick Gold Corp. is exploring Norma Sass under an agreement with Levon whereby Barrick holds an option to acquire up to a 75% interest in the property. Barrick recently reported its first drill hole at Norma Sass, completed to a depth of over 2,500 feet. The hole encountered the key Wenban formation at 1,300 feet and bottomed in the Roberts Mountain formation. These are the principal host rock formations for gold deposits at the Pipeline, Gold Acres and Cortez Hills mines. Assay results will be released once they are received from Barrick.

Levon's Norma Sass and Ruf properties are located alongside the Pipeline and Gold Acres mines in the heart of the Cortez Gold Trend.

RUF CLAIMS - Nevada

The Ruf Claims, held in partnership with Coral Gold Resources (Levon 1/3, Coral Gold 2/3), are located northeast of the Pipeline Mine. The claims have produced encouraging results in geophysical surveys and drilling since the 1980s.

Norma Sass property in the foreground, with the nearby Pipeline/Cortez mine in the background.



EAGLE CLAIMS - Nevada

The Eagle Claims lie approximately 10 miles N/NW of the Pipeline gold mine. The geological environment is similar to other gold deposits on the Cortez gold trend.

CONGRESS PROPERTY - British Columbia

Significant Gold Discoveries

Levon holds over 10,000 acres of mineral properties in British Columbia's historic Bridge River region, near Gold Bridge. The most developed property to date is the Congress, which has long been a compelling target for gold exploration. The nearby Bralorne-Pioneer Gold Mines, located 11 kilometres south of the property, have the largest reported gold production in the Canadian Cordillera with 4,155,627 ounces of gold.

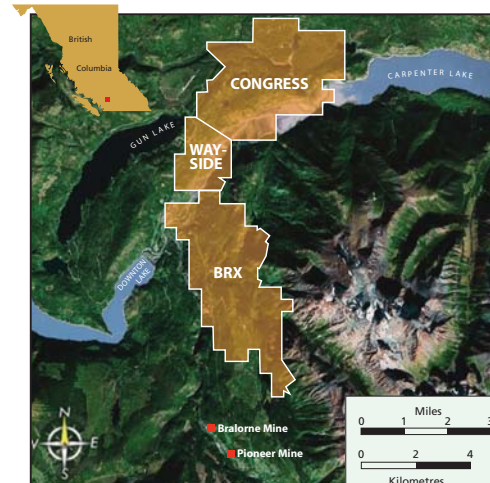
Ten Gold Zones - 194,000 ounces

Both surface and underground exploration have identified at least ten gold zones on the Congress. The following resources have been developed from only three principal zones:*

Mineral Zone	Tonnes	oz/ton	g/tonne	Resource Category	Troy oz Au
Howard	273,402.5	0.264	8.20	inferred	72,178
Howard	25,909	0.367	11.40	indicated	9,509
Howard	40,192	0.280	9.68	measured	11,254
Lou (underground)	189,548	0.350	10.90	inferred	66,342
Lou (open pit)	124,300	0.077	2.40	inferred	9,571
Congress	106,678	0.238	7.40	indicated	25,389

Total Ounces Au 194,283

* From "Trenching, Drilling and Metallurgical Testing on the Congress Property," November 15, 2005. Author David St. Clair Dunn, P.Geo. NI 43-101 Compliant.



Levon's three properties in the Bridge River District cover more than 10,000 acres near the historic Bralorne-Pioneer mine complex.

Levon Resources Ltd.

Suite 400, 455 Granville Street
Vancouver, BC V6C 1T1
(604) 682-3701

Ron Tremblay, President & CEO

Share Data:

Shares Outstanding: 57,639,483

Exchange Listings:

TSX Venture, **LVN**
US OTC, **LVNVF**
Berlin-Bremen, **LO9**
Frankfurt, **WKN 869769**

Contact:

Investor Relations
(604) 682-3701
ir@levon.com

www.levon.com